

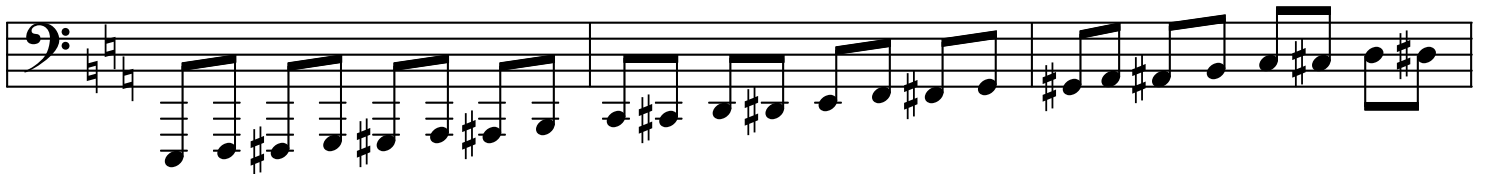
Audition for Tuba

1. Play the following scales as written. You may look at the music.



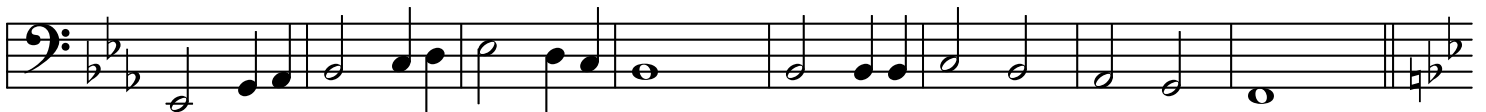
2. Play the following chromatic scale.

4 valve only



3. Play the following three selections:

A



B

Musical score for section B, Tuba part. It consists of three staves of music in bass clef with a key signature of one flat (B-flat major or D minor). The first staff begins with a *mf* dynamic and features a melodic line with accents. The second staff starts with a *f* dynamic and contains a more rhythmic, eighth-note passage. The third staff begins with a *mf* dynamic and includes a *cresc.* (crescendo) marking. The music concludes with a quarter rest.

C Fast

Musical score for section C, Tuba part, marked *Fast*. It consists of two staves of music in bass clef with a key signature of one flat. The first staff begins with a *f* dynamic and features a rhythmic eighth-note pattern. The second staff continues this pattern and concludes with a quarter rest.

4. Be ready to sight-read.